

# (Menu)目录

WIFI Config(English).....	2
WIFI 参数设置(中文).....	7

# WIFI Config(English)

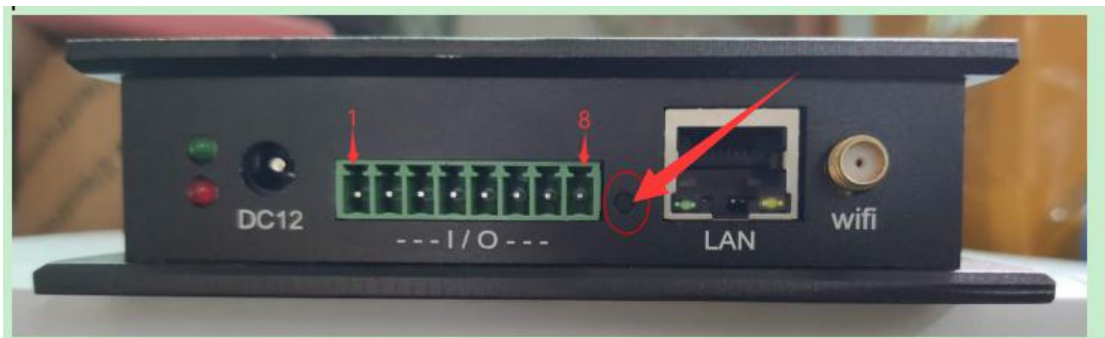
Please update your demo, the version shown in the following picture is only for demonstration.

## 1. Preliminary:

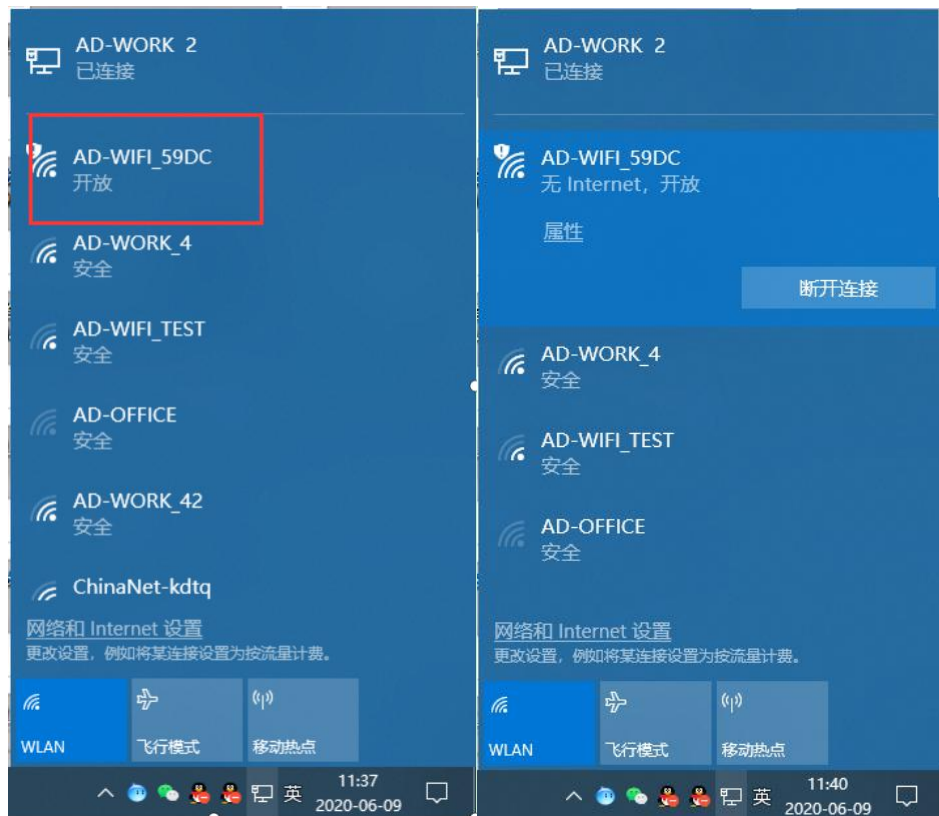
1. A Windows computer with Wi-Fi function;
2. The reader demo is required on the computer;
3. Install the Wi-Fi antenna on the reader and plug it into the power supply;

## 2. Reset reader Wi-Fi parameters:

Press and hold the small black dot on the card reader for more than 5 seconds and release it.  
The green indicator light on the network port is off, indicating that the reset is successful.



## 3. The computer Wi-Fi is connected to the reader Wi-Fi. The name of Wi-Fi is "AD-WIFI\_ xxxx"



## 4. Open the demo program, select NET INTERFACE, and click Broadcast;

RFID READER DEMO - [Ver:3.3.3.1]
CONNECT(C) LANGUAGE HELP(H)

CHOOSE INTERFACE

☐ SERIAL INTERFACE
☒ NET INTERFACE
☐ USB INTERFACE

NET INTERFACE
Remote IP: 10.10.100.254 Remote Port: 49152 Ping Broadcast

**[ATTENTIONS]**

1. Any problem of reader, please restore the factory settings,the steps are as follows:  
[CONNECT->BASE SETTINGS->Default All->Set Para];

2. When connect the reader and get or set parameters, keep the reader silent (to prevent data conflicts);

3. When the reader is connected to the controller through the weigand interface or syris485 interface,  
if the controller shows the same card number, please adjust the "Byte Offset" value:  
WG26 usually set 9 or 5; WG34 usually set 8 or 4; Syris485 usually set 8 or 4;

4. EPC Number(Hex card): 01-02-03-04-05-06-07-08-09-10-11-12  
Byte Offset=0, WG26 card number ="01-02-03", WG34 card number ="01-02-03-04";  
Byte Offset=4, WG26 card number ="05-06-07", WG34 card number ="05-06-07-08";

Time	RCP Type	RCP Packet(HEX)	Time	Current Status
			11:41:20 732	未发现USB设备,请点击F5刷新

DISCONNECTED || 10.10.100.254 || 49152 || ---- || Status..

RFID READER DEMO - [Ver:3.3.3.1]

CONNECT(C) LAN

CHOOSE INTERFACE

☐ SERIAL INTERFA
☒ NET INTERFACE
☐ USB INTERFACE

NET INTERFACE
Remote IP: 10.10.100.254 Remote Port: 49152 Ping Broadcast

**[ATTENTIONS]**

1. Any problem of [CON

2. When connect t

3. When the reader if the controller WG26 usually set

4. EPC Number(He Byte Offset=0, WG Byte Offset=4, WG

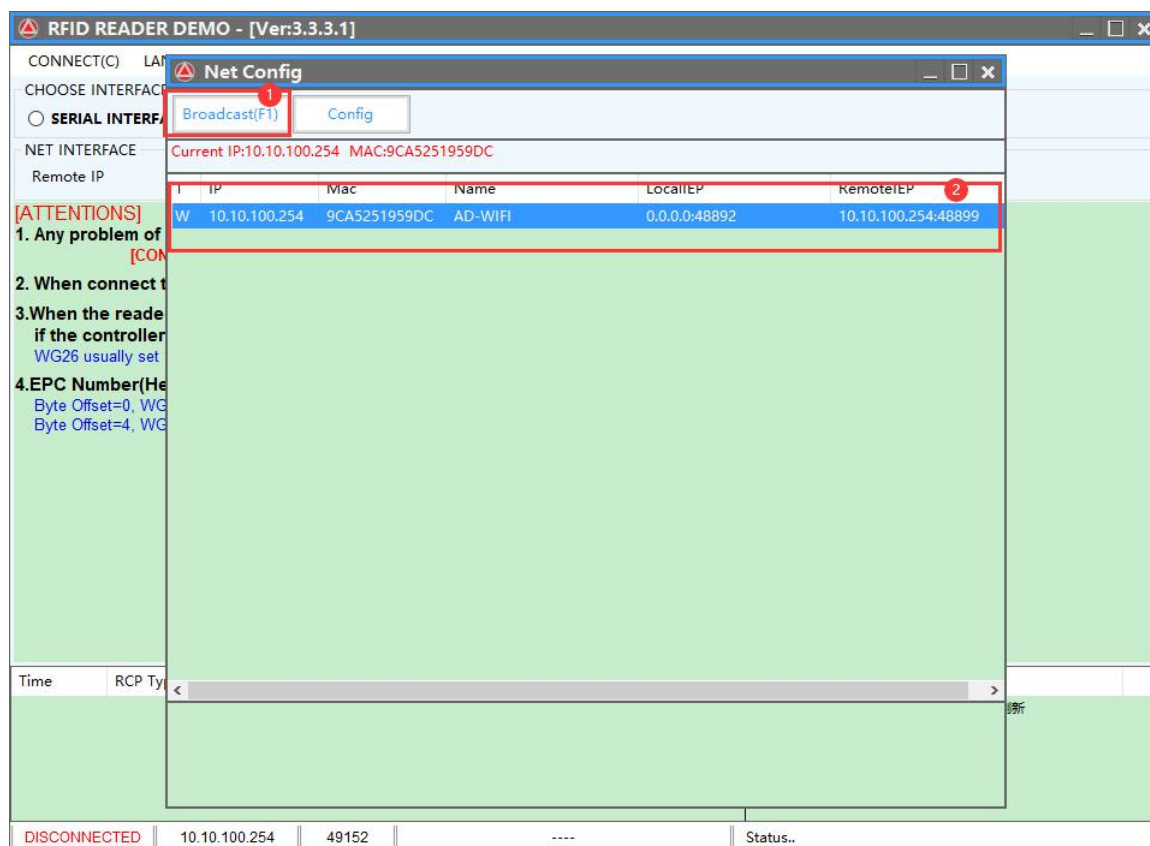
Net Config
Broadcast(F1) Config

T	IP	Mac	Name	LocalIP	RemotelIP

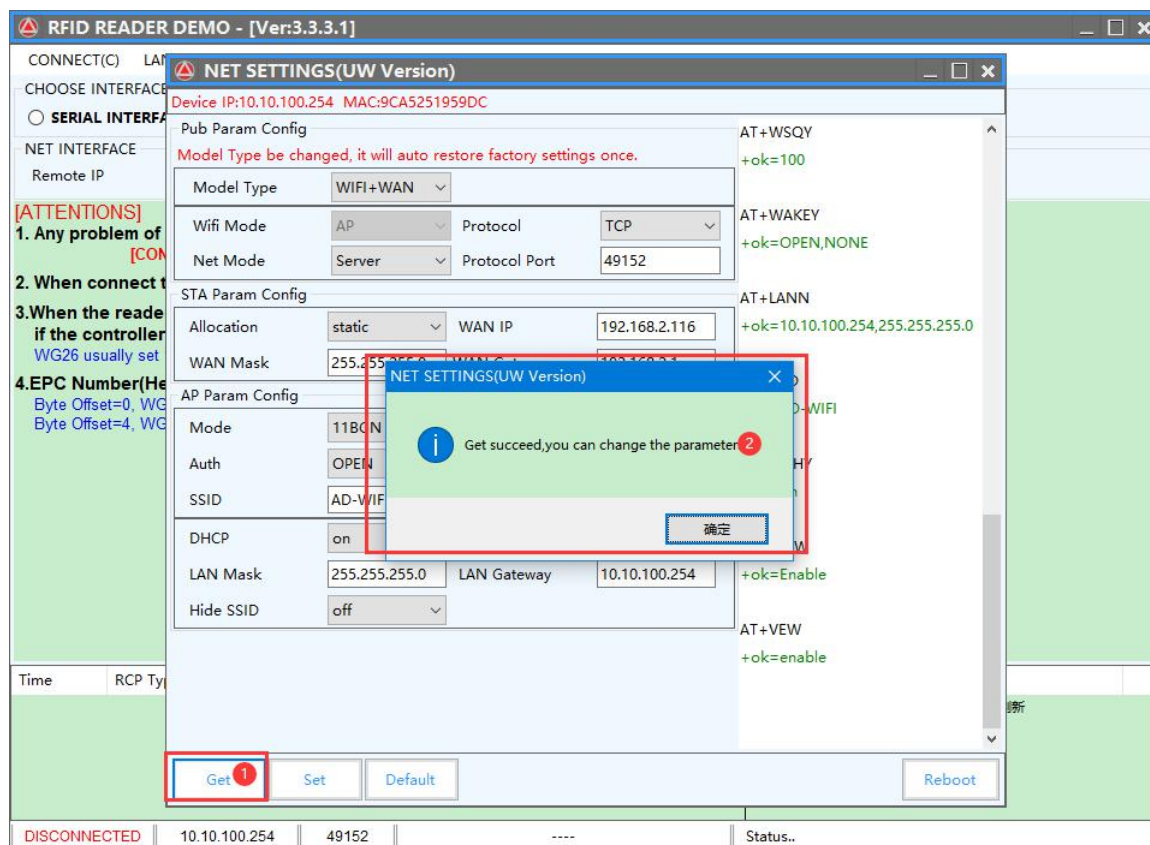
Time	RCP Ty			

DISCONNECTED || 10.10.100.254 || 49152 || ---- || Status..

5. Click Broadcast, wait for the device to appear, and then double-click the selected item;



6. Click the get parameter button and wait for the pop-up window;



7. Set parameters according to your needs;
- 7.1. Reader network cable to router;
- 7.1.1. Using dynamic IP, router assigns IP, then;  
Change the Allocation in STA Param Config to DHCP;

The screenshot shows the 'NET SETTINGS(UW Version)' window. At the top, it displays 'Device IP:10.10.100.254' and 'MAC:9CA5251959DC'. Below this is the 'Pub Param Config' section with a warning: 'Model Type be changed, it will auto restore factory settings once.' The 'Model Type' is set to 'WIFI+WAN'. The 'Wifi Mode' is 'AP', 'Protocol' is 'TCP', 'Net Mode' is 'Server', and 'Protocol Port' is '49152'. The 'STA Param Config' section is highlighted with a red box; 'Allocation' is set to 'DHCP', 'WAN IP' is '192.168.2.116', 'WAN Mask' is '255.255.255.0', and 'WAN Gateway' is '192.168.2.1'. Below this is the 'AP Param Config' section with 'Mode' '11BGN', 'Channel' 'Auto', 'Auth' 'OPEN', 'Encry' 'NONE', 'SSID' 'AD-WIFI\_59DC', 'Key' empty, 'DHCP' 'on', 'LAN IP' '10.10.100.254', 'LAN Mask' '255.255.255.0', 'LAN Gateway' '10.10.100.254', and 'Hide SSID' 'off'. On the right, a list of AT commands and their status is shown: AT+WSQY (+ok=100), AT+WAKKEY (+ok=OPEN,NONE), AT+LANN (+ok=10.10.100.254,255.255.255.0), AT+MID (+ok=AD-WIFI), AT+FEPHY (+ok=on), AT+FVEW (+ok=Enable), and AT+VEW (+ok=enable). At the bottom are buttons for 'Get', 'Set', 'Default', and 'Reboot'.

- 7.1.2. Use static IP, then;  
Change the Allocation in STA Param Config to static;  
IP address, IP mask and IP gateway settings are determined according to the network you want to access; (please ask your network engineer)

This screenshot is identical to the previous one, but the 'Allocation' in the 'STA Param Config' section is now set to 'static'. The other settings remain the same. The AT command list on the right and the bottom buttons are also identical.

7.2. Reader network cable connect to computer or net switch;

It must be set to static IP; the setting mode is as shown in 7.1.2;

7.3. Reader network cable to router,Reader Wi-Fi as a secondary wireless router;

STA parameters are set according to 7.1;

AP parameters are set according to your own needs; (**AP IP address network segment cannot be the same as sta network segment**)

7.4. Reader network cable connect to computer or net switch,Reader Wi-Fi as a secondary wireless router;

STA parameters are set according to 7.2;

AP parameters are set according to your own needs; (**AP IP address network segment cannot be the same as sta network segment**)

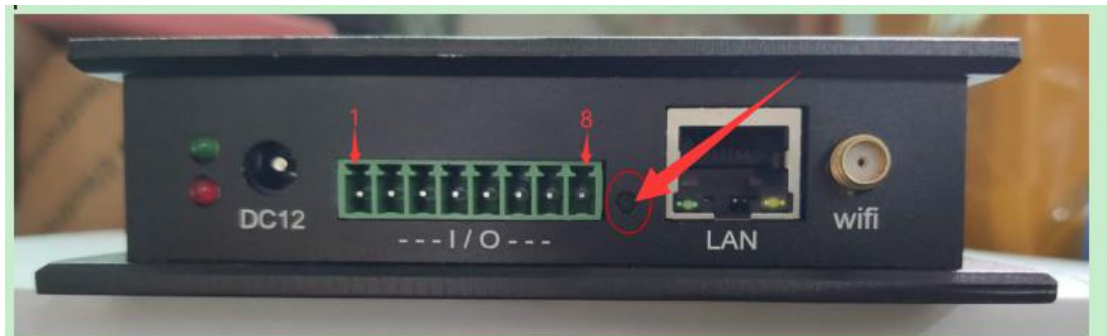


## WIFI 参数设置(中文)

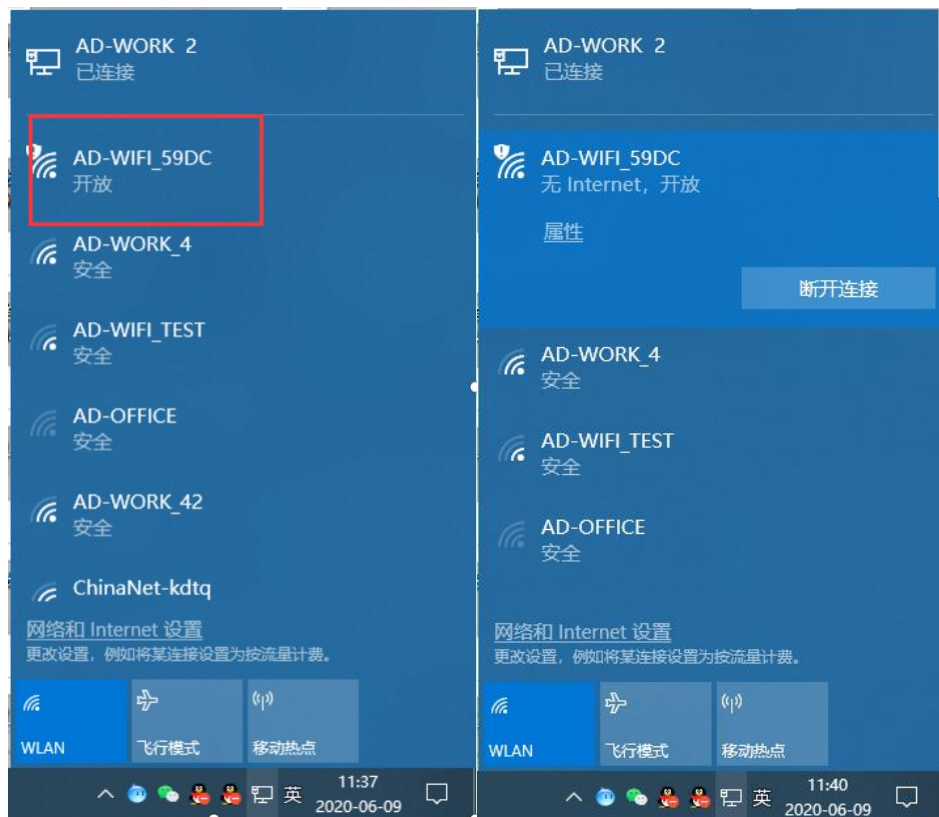
请更新你的演示软件,下面图片显示的版本号仅演示用.

1. 准备:
  4. 带 WIFI 功能 windows 电脑一台;
  5. 电脑上需带有该读卡器演示程序;
  6. 将读卡器装上 WIFI 天线,插入电源;
2. 重置读卡器 WIFI 参数:

长按读卡器上面小黑点 5 秒以上后松开.  
网口上绿色指示灯熄灭表示重置成功.



3. 电脑 WIFI 连接到读卡器开放 WIFI,WIFI 名称为"AD-WIFI\_XXXX"



4. 打开演示程序,选择网络通讯,点击搜索网络设备;

读卡器演示程序 - [Ver:3.3.3.1]

联机(C)LANGUAGE帮助(H)

通讯参数配置

串口通讯(RS232/RS485)

网络通讯(TCP/WIFI)

USB通讯(虚拟键盘/编程模式)

网络通讯(TCP/WIFI)

远程IP地址

10.10.100.254

远程IP端口

49152

网络诊断

搜寻联网设备

[注意事项]

1. 任何读卡器问题请先恢复出厂设置,步骤如下:  
[联机->基本参数->默认所有参数->设置参数]

2. 联机或者获取设置参数时候,请保持读卡器静默状态(防止数据冲突);

3. 当接韦根控制器或者连接玺瑞(485)控制器输出卡号都相同时,请调整"数据偏移"值,  
韦根26通常设置9或者5; 韦根34通常设置8或者4; 玺瑞(485)通常设置8或者4;

4. EPC卡号(16进制卡号): 01-02-03-04-05-06-07-08-09-10-11-12  
偏移值=0时, WG26卡号 = "01-02-03", WG34卡号 = "01-02-03-04";  
偏移值=4时, WG26卡号 = "05-06-07", WG34卡号 = "05-06-07-08";

时间	数据类型	数据包(16进制)	时间	当前状态
			11:41:20 732	未发现USB设备,请点击F5刷新

未连接设备 || 10.10.100.254 || 49152 || ---- || Status..

读卡器演示程序 - [Ver:3.3.3.1]

联机(C)LANGUAGE帮助(H)

网络模块配置软件

搜索(F1)

设置

通讯参数配置

串口通讯(RS232/RS485)

网络通讯(TCP/WIFI)

USB通讯(虚拟键盘/编程模式)

网络通讯(TCP/WIFI)

远程IP地址

10.10.100.254

远程IP端口

49152

网络诊断

搜寻联网设备

[注意事项]

1. 任何读卡器问题请先恢复出厂设置,步骤如下:  
[联机->基本参数->默认所有参数->设置参数]

2. 联机或者获取设置参数时候,请保持读卡器静默状态(防止数据冲突);

3. 当接韦根控制器或者连接玺瑞(485)控制器输出卡号都相同时,请调整"数据偏移"值,  
韦根26通常设置9或者5; 韦根34通常设置8或者4; 玺瑞(485)通常设置8或者4;

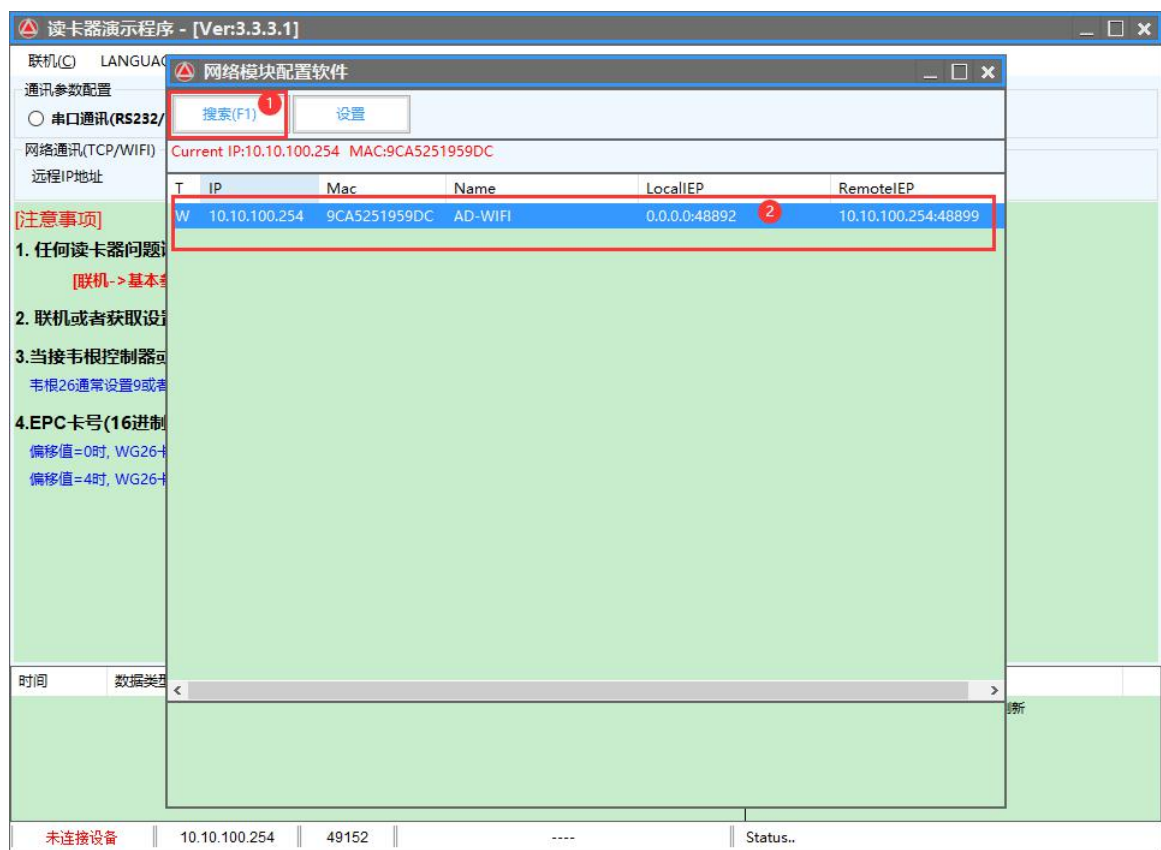
4. EPC卡号(16进制卡号): 01-02-03-04-05-06-07-08-09-10-11-12  
偏移值=0时, WG26卡号 = "01-02-03", WG34卡号 = "01-02-03-04";  
偏移值=4时, WG26卡号 = "05-06-07", WG34卡号 = "05-06-07-08";

时间	数据类型	数据包(16进制)	时间	当前状态
			11:41:20 732	未发现USB设备,请点击F5刷新

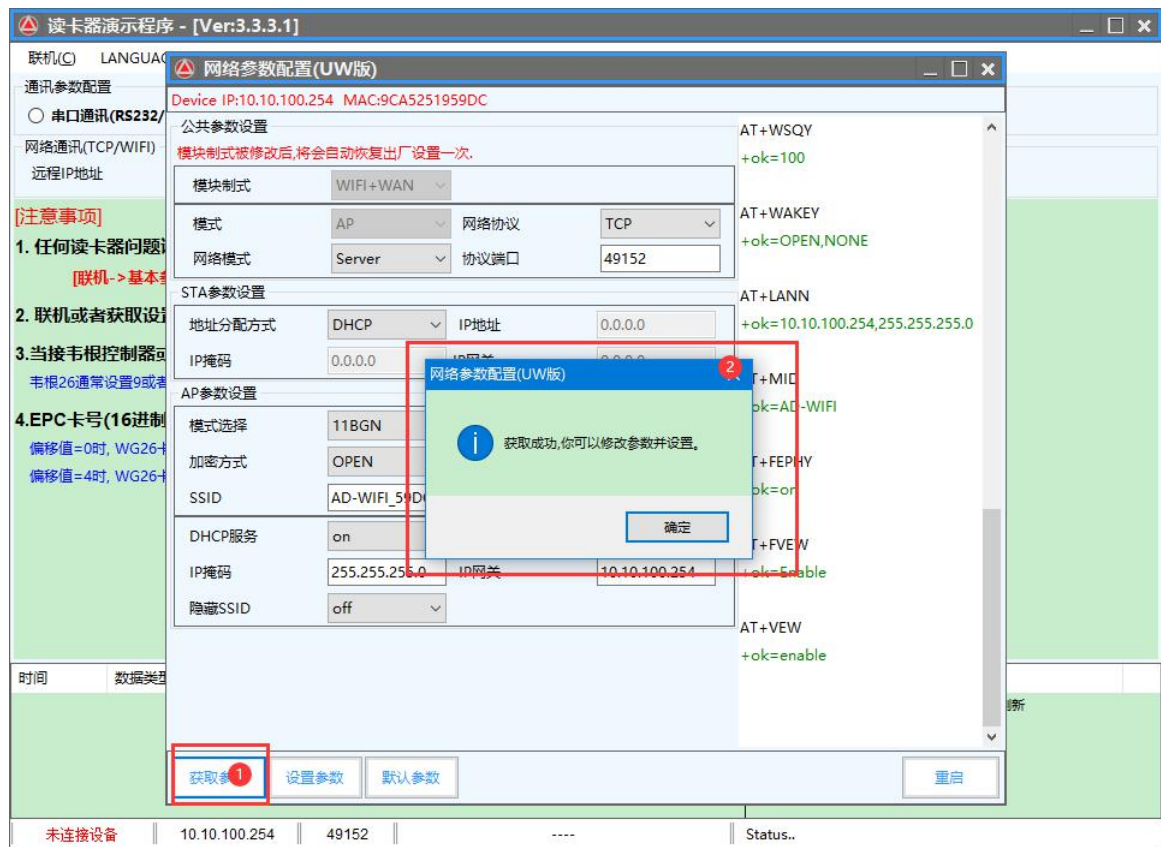
未连接设备 || 10.10.100.254 || 49152 || ---- || Status..



5. 点击搜索,等待设备出现,然后双击选中项;



6. 获取参数,等待弹出窗口;



7. 根据你所需要来设置参数;
- 7.1. 网线连接路由器;
- 7.1.1. 使用动态 IP,由路由器分配 IP 则;
- 将 STA 参数设置里面的地址分配方式改成 DHCP;

网络参数配置(UW版)

Device IP:10.10.100.254 MAC:9CA5251959DC

公共参数设置

模块制式: WIFI+WAN

模式: AP 网络协议: TCP

网络模式: Server 协议端口: 49152

STA参数设置

地址分配方式: DHCP IP地址: 192.168.2.116

IP掩码: 255.255.255.0 IP网关: 192.168.2.1

AP参数设置

模式选择: 11BGN 信道选择: Auto

加密方式: OPEN 加密算法: NONE

SSID: AD-WIFI\_59DC 密钥:

DHCP服务: on IP地址: 10.10.100.254

IP掩码: 255.255.255.0 IP网关: 10.10.100.254

隐藏SSID: off

AT+FEPHY  
+ok=on

AT+FVEW  
+ok=Enable

AT+VEW  
+ok=enable

AT+WANN=DHCP  
+ok

AT+WANN=static,192.168.2.116,2  
55.255.255.0,192.168.2.1

AT+WANN=static,192.168.2.116,2  
55.255.255.0,192.168.2.1

+ok

+ok

获取参数 设置参数 默认参数 重启

- 7.1.2. 使用静态 IP,则;
- 将 STA 参数设置里面的地址分配方式改成 static;
- IP 地址,IP 掩码,IP 网关设置根据你要接入的网络来定;(请问你们网络工程师)

网络参数配置(UW版)

Device IP:10.10.100.254 MAC:9CA5251959DC

公共参数设置

模块制式: WIFI+WAN

模式: AP 网络协议: TCP

网络模式: Server 协议端口: 49152

STA参数设置

地址分配方式: static IP地址: 192.168.2.116

IP掩码: 255.255.255.0 IP网关: 192.168.2.1

AP参数设置

模式选择: 11BGN 信道选择: Auto

加密方式: OPEN 加密算法: NONE

SSID: AD-WIFI\_59DC 密钥:

DHCP服务: on IP地址: 10.10.100.254

IP掩码: 255.255.255.0 IP网关: 10.10.100.254

隐藏SSID: off

AT+FEPHY  
+ok=on

AT+FVEW  
+ok=Enable

AT+VEW  
+ok=enable

AT+WANN=DHCP  
+ok

AT+WANN=static,192.168.2.116,2  
55.255.255.0,192.168.2.1

AT+WANN=static,192.168.2.116,2  
55.255.255.0,192.168.2.1

+ok

+ok

获取参数 设置参数 默认参数 重启

- 7.2. 网线连接电脑或者交换机;  
必须设置成静态 IP;设置方式如 7.1.2;
- 7.3. 网线连接路由器,读卡器 WIFI 做二级无线路由器;  
STA 参数按 7.1 设置;  
AP 参数根据自己需要进行设置;**(AP IP 地址网段不能和 STA 网段相同)**
- 7.4. 网线连接电脑或者交换机,读卡器 WIFI 做二级无线路由器;  
STA 参数按 7.2 设置;  
AP 参数根据自己需要进行设置;**(AP IP 地址网段不能和 STA 网段相同)**

## 7.5. 读卡器做 SERVER

将 网络模式 设置成 Server, 协议端口根据你的需要修改(默认值 49152);

网络参数配置(UW版)

Device IP:10.10.100.254 MAC:9CA5251959DC

公共参数设置

模块制式: WIFI+WAN

模块制式被修改后,将会自动恢复出厂设置一次.

模式: AP

网络协议: TCP

网络模式: Server

协议端口: 49152

STA参数设置

地址分配方式: static

IP地址: 192.168.2.116

IP掩码: 255.255.255.0

IP网关: 192.168.2.1

AP参数设置

模式选择: 11BGN

信道选择: Auto

加密方式: OPEN

加密算法: NONE

SSID: AD-WIFI\_59DC

密钥:

DHCP服务: on

IP地址: 10.10.100.254

IP掩码: 255.255.255.0

IP网关: 10.10.100.254

隐藏SSID: off

AT+FEPHY  
+ok=on

AT+FVEW  
+ok=Enable

AT+VEW  
+ok=enable

AT+WANN=DHCP  
+ok

AT+WANN=static,192.168.2.116,2  
55.255.255.0,192.168.2.1

AT+WANN=static,192.168.2.116,2  
55.255.255.0,192.168.2.1

+ok

获取参数 设置参数 默认参数 重启

## 7.6. 读卡器做 CLIENT

将 网络模式 设置成 Client,

协议端口根据你的服务器监听端口来修改(默认值 49152);

服务器地址根据你的服务器 IP 地址(域名)来修改(请问你们网络工程师);

网络参数配置(UW版)

Device IP:10.10.100.254 MAC:9CA5251959DC

公共参数设置

模块制式: WIFI+WAN

模块制式被修改后,将会自动恢复出厂设置一次.

模式: AP

网络协议: TCP

网络模式: Client

协议端口: 49155

服务器地址: www.baidu.com

STA参数设置

地址分配方式: static

IP地址: 192.168.2.116

IP掩码: 255.255.255.0

IP网关: 192.168.2.1

AP参数设置

模式选择: 11BGN

信道选择: Auto

加密方式: OPEN

加密算法: NONE

SSID: AD-WIFI\_59DC

密钥:

DHCP服务: on

IP地址: 10.10.100.254

IP掩码: 255.255.255.0

IP网关: 10.10.100.254

隐藏SSID: off

AT+FEPHY  
+ok=on

AT+FVEW  
+ok=Enable

AT+VEW  
+ok=enable

AT+WANN=DHCP  
+ok

AT+WANN=static,192.168.2.116,2  
55.255.255.0,192.168.2.1

AT+WANN=static,192.168.2.116,2  
55.255.255.0,192.168.2.1

+ok

获取参数 设置参数 默认参数 重启